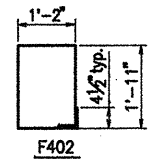
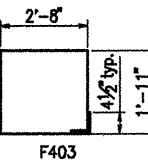


DATE REVISED	DATE FILMED	DATE REVISED	DATE FILMED	FED. ROAD NO.	STATE	FED. AID PROJ. NO.	SHEET NO.	TOTAL SHEETS
					ARK.			
						JOB NO. 110503	99	233
						06829 & 07027 APPR. SLABS	41904	

BAR LIST-PER BENT

Mark	No. Req'd	Length	P.D.	Bending Diagrams
S401	25	23'-8"	Str.	<p>Dimensions are out to out of bars.</p> 
S402	16	36'-2"	Str.	
S403	50	3'-0"	Str.	
S501	37	23'-8"	Str.	
S701	48	36'-2"	Str.	
F401	16	23'-8"	Str.	
F402	24	6'-6"	2"	
F403	24	9'-6"	2"	
F501	24	2'-8"	Str.	

GENERAL NOTES:

- All concrete shall be Class "S". (AE) (f'c = 4,000 psi).
- Reinforcement steel shall conform to AASHTO M31 or M53, Grade 60. (fy = 60,000 psi).
- Approach slabs will be measured and paid for in accordance with Section 504 of the Standard Specifications.
- This drawing to be used with Dwg. 41905.

TABLE OF QUANTITIES

ONE APPROACH SLAB

Reinforcing Steel (Lbs.)	Concrete (c.y.)
5919	48.5

ALTERNATES NO. 1 & NO. 2

DETAILS OF SPECIAL APPROACH SLAB

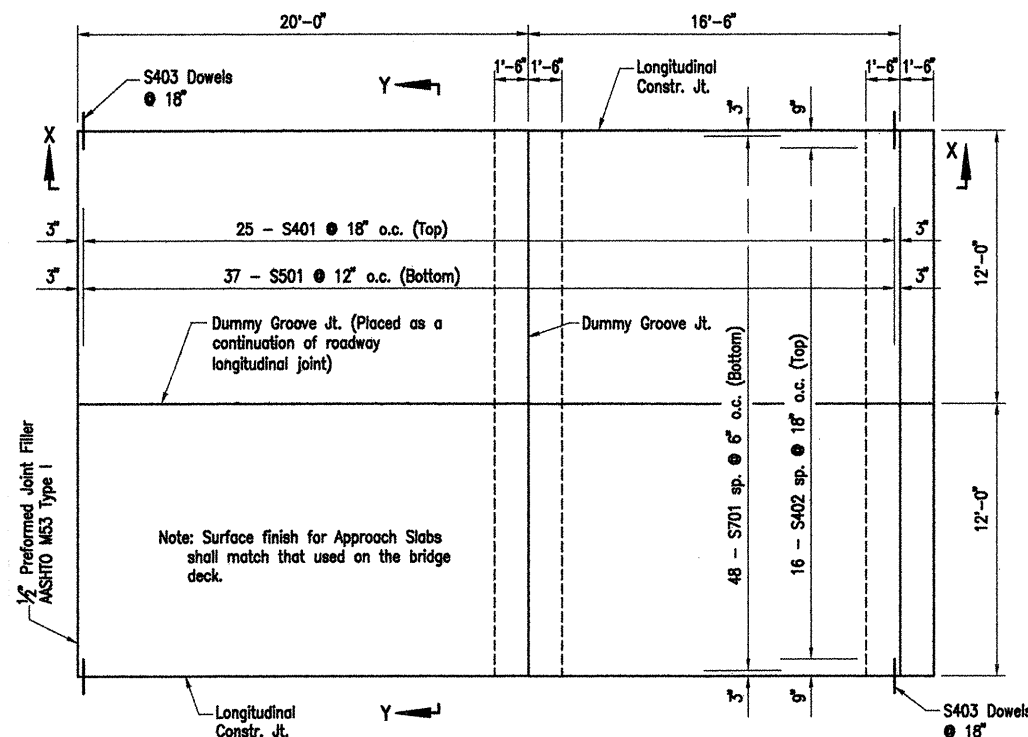
ROC ROE & WHITE RIVER RELIEF
STRS. & APPRS. (CLARENDON) (F)
MONROE COUNTY

ROUTE 79 SEC. 13

ARKANSAS STATE HIGHWAY COMMISSION
LITTLE ROCK, ARK.

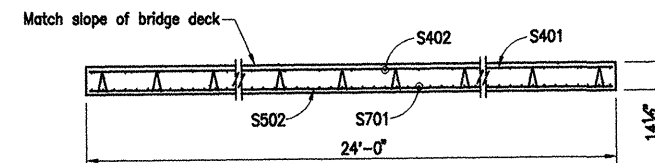
Engstrom/Modjeski and Masters, Inc.

DRAWN BY: PMR DATE: Sept. 07 FILENAME: b110503.d1
CHECKED BY: YO DATE: Nov. 01 SCALE: 1/4" = 1'-0"
DESIGNED BY: FS DATE: Nov. 01
BRIDGE NO. 06829 & 07027 DRAWING NO. 41904



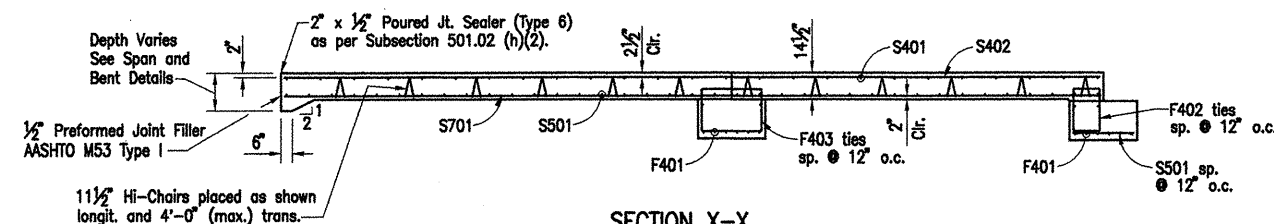
PLAN - APPROACH SLAB

Scale: 1/4" = 1'-0"



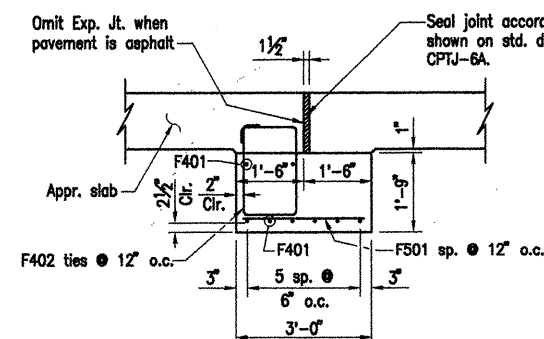
SECTION Y-Y

N.T.S.



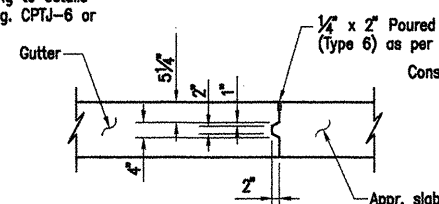
SECTION X-X

N.T.S.



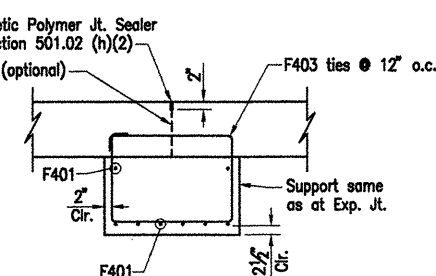
DETAILS OF SUPPORT
AT EXPANSION JOINT

Scale: 1/2" = 1'-0"



DETAILS OF LONGITUDINAL
CONSTRUCTION JOINT

Scale: 1/2" = 1'-0"



DETAILS OF DUMMY
GROOVED JOINT

Scale: 1/2" = 1'-0"



BRIDGE ENGINEER